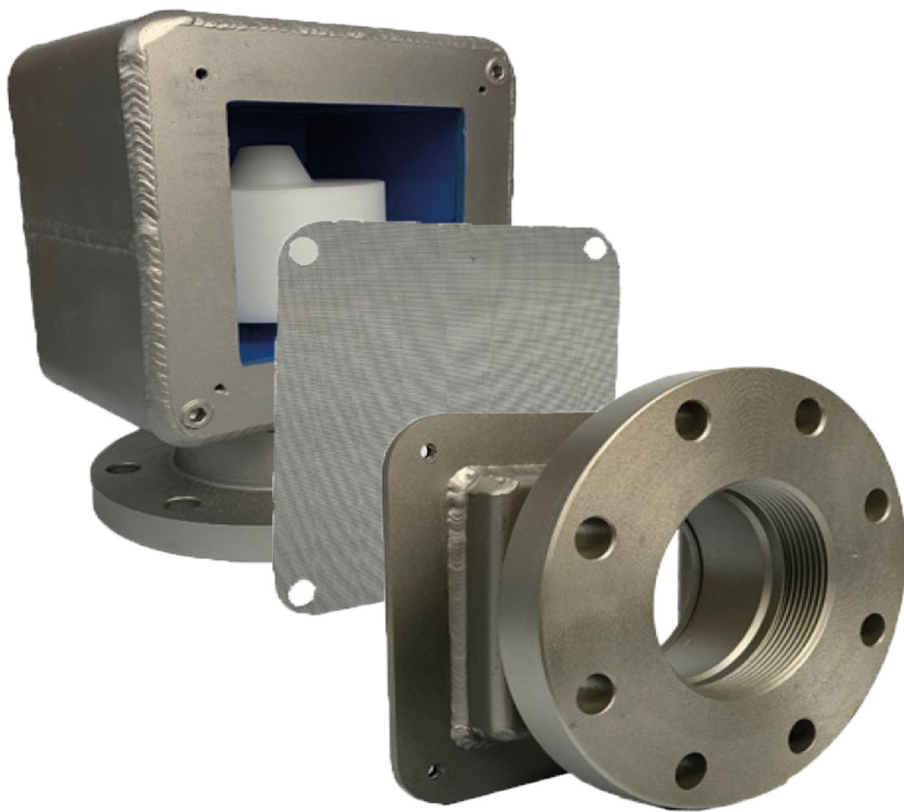


Vertical vent check valve **1500-90**

The 1500 Series-90 is designed for installations where a 90 degree mount is necessary. The flanged outlet mounts with a 90 degree turn instead of our standard vertical mount.

The 1500-90 allows for ventilation in the open position, and a disc style float will rise in the event of heavy seas and prevent sea water and debris from entering into tanks and bulkheads.

The 1500-90 is available in all sizes



SPECIFICATIONS

GALVANIZED STEEL / ANODIZED ALUMINUM

CONNECTIONS

Threaded (1.5"-6" only)

Buttweld (1.5"-6" only)

Flanged (metric available)

Victaulic groove coupling

SIZES

1.5", 2", 2.5", 3", 4", 5", 6", 8",
10", 12", 14"

304 STAINLESS STEEL / 316 STAINLESS STEEL

CONNECTIONS

Threaded (1.5"-6" only)

Buttweld (1.5"-6" only)

Flanged (metric available)

Victaulic groove coupling

SIZES

1.5", 2", 2.5", 3", 4", 5", 6", 8",
10", 12", 14"



Email: info@wager-europe.com

Telephone: +31 343 45 78 63

Web: Wager-europe.com