

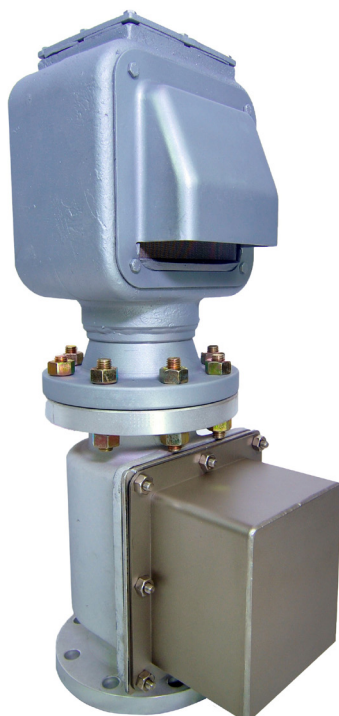
# Mud vent valve

## 1500-MV

The 1500-MV Mud Valve is designed for tanks that carry liquid mud. Inside the mud chamber is a ball check that prevents the liquid mud from rising into the upper vertical vent check valve. The liquid mud is instead forced through a spring loaded door (instead of a burst disc) on the front of the valve. After the mud flow resides, the ball float returns to its original position allowing airflow to return through the upper chamber. The 1500-MV is designed for ease of maintenance. To clean, simply remove the front cover assembly, clean, and replace.

Wager's Model 1500 Vertical Vent Check Valve works in collaboration with the 1500-MV Mud Valve. Simply connect the two valves together at the flange.

Our ABS approval requires



## SPECIFICATIONS

### GALVANIZED STEEL

#### CONNECTIONS

Threaded

Welded

Flanged

Metric flange

Victaulic flange

#### SIZES

4", 5", 6", 8", 10"

### 316 STAINLESS STEEL

#### CONNECTIONS

Threaded

Welded

Flanged

Metric flange

Victaulic flange

#### SIZES

4", 5", 6", 8", 10"

### ANODIZED ALUMINUM (UPON REQUEST)

#### CONNECTIONS

Threaded

Welded

Flanged

Metric flange

Victaulic flange

#### SIZES

4", 5", 6", 8", 10"



Email: [info@wager-europe.com](mailto:info@wager-europe.com)

Telephone: +31 343 45 78 63

Web: [Wager-europe.com](http://Wager-europe.com)