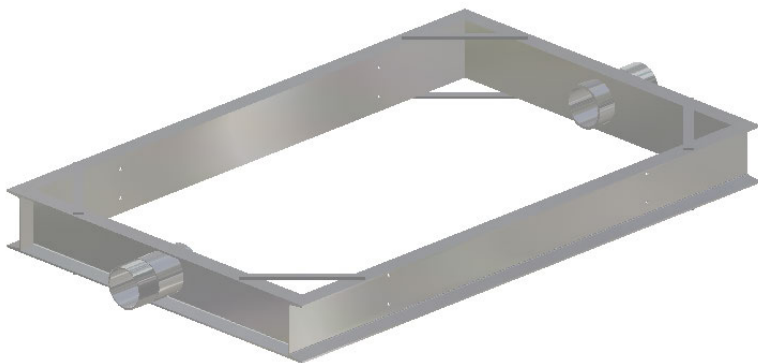


6500RR RAILROAD OPACITY METER

The 6500RR opacity meter provides a simple and easy means of detecting and measuring the opacity of smoke being emitted by a diesel locomotive engine. Our standard system comes complete with a unique mounting frame, heavy duty optics to withstand high temperatures, and shielded cables to guard against any possible damage to wiring.



Railroad Mounting Frame

- 0-1Volt Retransmission output for use with a chart recorder or data acquisition system.

- Stores 100 samples per second

Has a rise time of .5 seconds

- Has a light source collimated to a diameter of 1.125 inches for accuracy while spanning longer distances



WAGER
C O M P A N Y

WWW.WAGERUSA.COM
Toll Free USA: 800-562-7024